



memorial road
CHURCH OF CHRIST

SHARING GOD'S LOVE TO TRANSFORM PEOPLE
INTO FULLY DEVOTED FOLLOWERS OF CHRIST

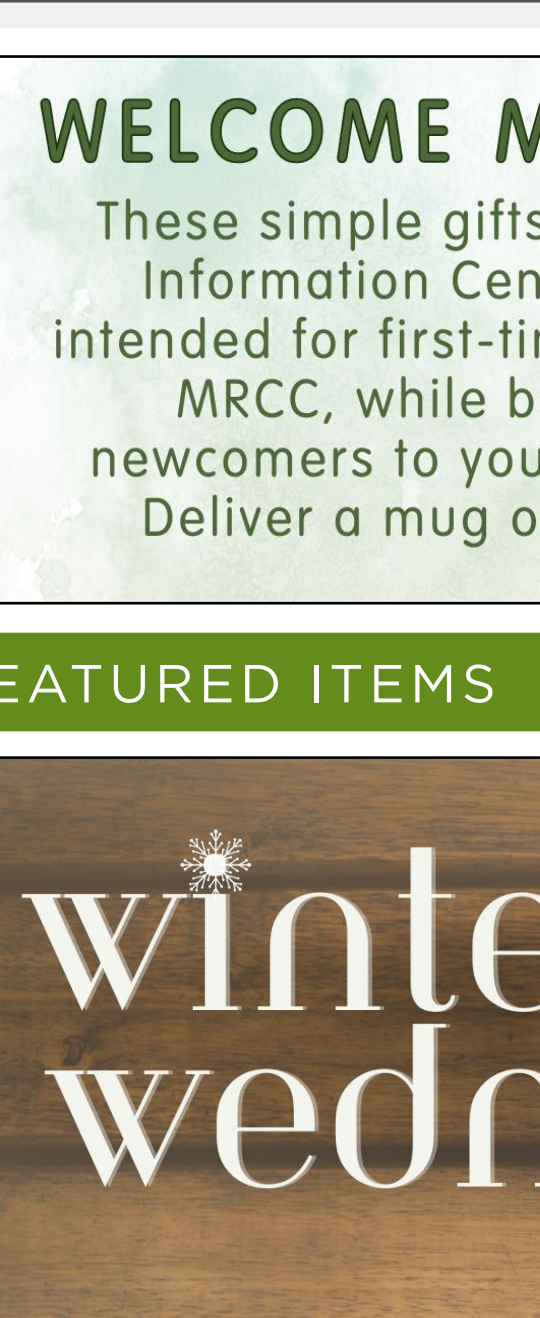
Jan 07
2024

THANKS FOR JOINING US TODAY!



Please take a moment to sign the Welcome Book, located in your pew. Members, please greet any guests seated near you.

If you're joining us virtually, sign easily at mrcc.org/welcomebook.



Please Join Us For First Cup

First Cup is an opportunity for newcomers to learn more about MRCC

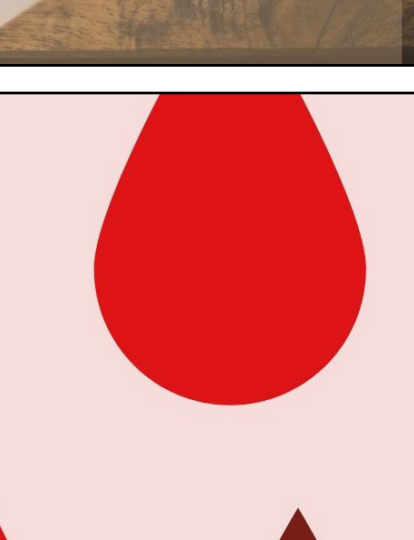
Every Sunday at 9:35 a.m.
in the Welcome Center

Visit mrcc.org/firstcup for more details



WELCOME MUGS AND BASKETS

These simple gifts are available at Information Central. Mugs are intended for first-time, local guests to MRCC, while baskets are for newcomers to your neighborhood. Deliver a mug or basket today!



FEATURED ITEMS

winter wednesdays

The new quarter begins January 10!

See the class listings at

mrcc.org/wednesdays

BLOOD DRIVE TODAY

SAVE A LIFE,
DONATE BLOOD

MRCC SUMMIT
7:30 AM - 12:30 PM

MINISTRY UPDATES

women's ministry

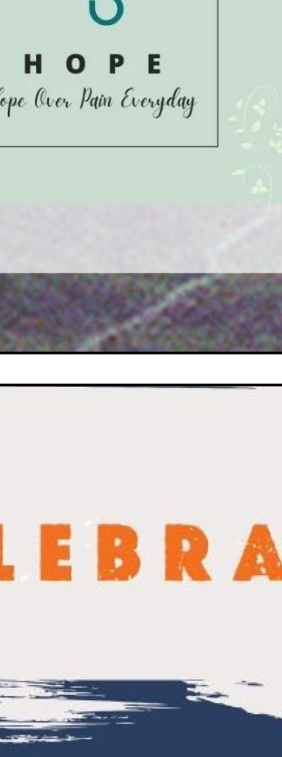
NEST for Widows

meets tomorrow, Jan. 8, 6:30-8 p.m. in A105-106. All widows are welcome, and details are at mrcc.org/nest.



WINTER WOMEN'S BRUNCH:

Save Saturday, Feb. 10, 10 a.m. to 12 p.m., for our annual women's brunch. Registration starts Jan. 21!

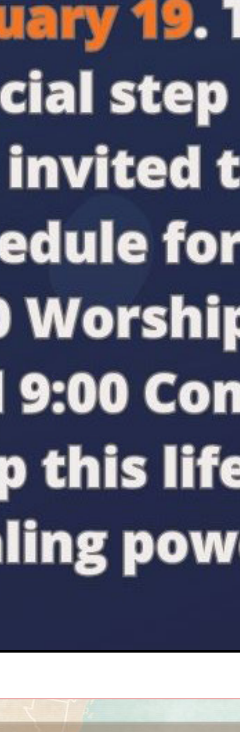


Visit mrcc.org/care for details on all our CARE Ministry offerings

Family to Family

is an educational program for family, significant others, and friends of people with mental health conditions. The material is provided by NAMI (National Alliance on Mental Illness) and is a very thorough, supportive program. *Family-to-Family* will be led by MRCC member Jeff Mager, beginning today through March 3, from 2-4:30 p.m., in Room A117-118. Pre-registration is required. There is no cost to participants

Learn more at mrcc.org/care.



H.O.P.E

The Help Over Pain Everyday support group, for those with chronic pain, will not meet in January. The next meeting will be on Feb. 13, from 10-11:30 a.m., in Room A102.

CELEBRATE RECOVERY

MEETS EVERY FRIDAY

6 PM - DINNER

1ST TIME GUESTS EAT FREE!!!

7 PM - LARGE GROUP

A TIME OF WORSHIP FOLLOWED BY PERSONAL TESTIMONY OR RECOVERY LESSON

8 PM - OPEN SHARE GROUPS

GENDER AND ISSUE SPECIFIC SMALL GROUPS

9 PM - COMMON GROUNDS

FELLOWSHIP, COFFEE & DESSERT

PARTICIPANTS RECEIVE

FREE CHILDCARE 6:45-9:15

MRCC.ORG/CR

celebraterecovery@mrcc.org

18TH ANNIVERSARY CELEBRATION

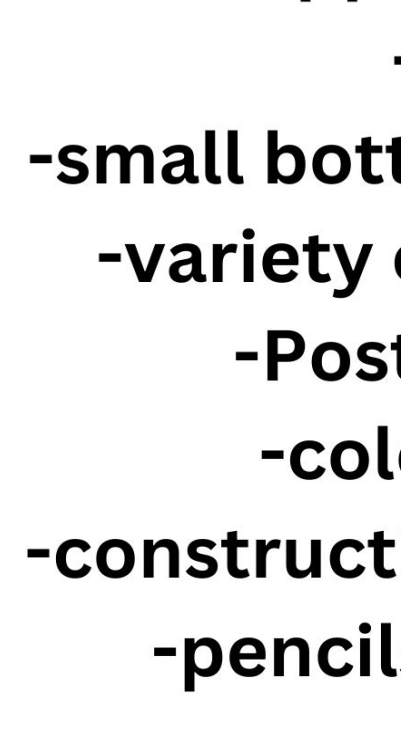
CR is having their 18th anniversary night on January 19. There will be a testimony and a special step study graduation that night. You are invited to attend this special event. Their schedule for the evening is: 6:00 -6:45 for dinner, 7:00 Worship and Testimony, 8:00 small groups and 9:00 Common Grounds/Fellowship Time. Help this life-changing ministry celebrate God's healing power!



Missions Update From Campinas, Brazil



Allen & Robin Dutton, our missionaries in Campinas, Brazil, sent an encouraging update on their work from this past year. One year ago, they inaugurated their latest church plant, this one in Valinhos, a suburb of Campinas in which the Duttons live. Beginning with six families, the congregation has already seen numerous baptisms and has grown to include 25 families at the end of 2023! They head into the new year with many plans, including the launch of several new ministries. Let's praise God for the work He is doing in Brazil and keep the Duttons and all of our missionaries in our prayers as they carry out Christ's commission in 2024!



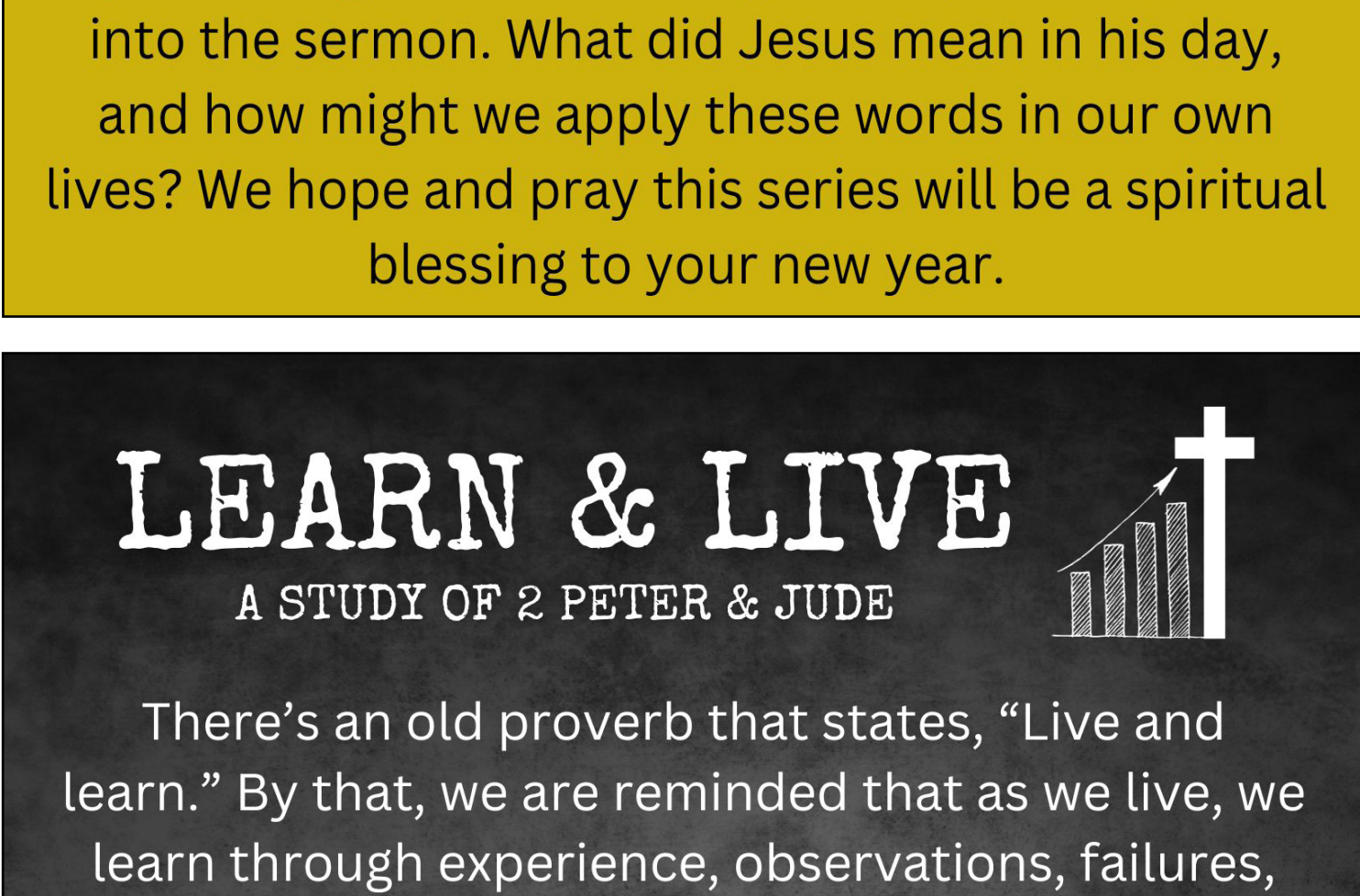
Heartbeat
FOR HOPE

A mission team is heading to Village of Hope Orphanage in Ghana, West Africa, on Feb. 1.

Supplies needed are:

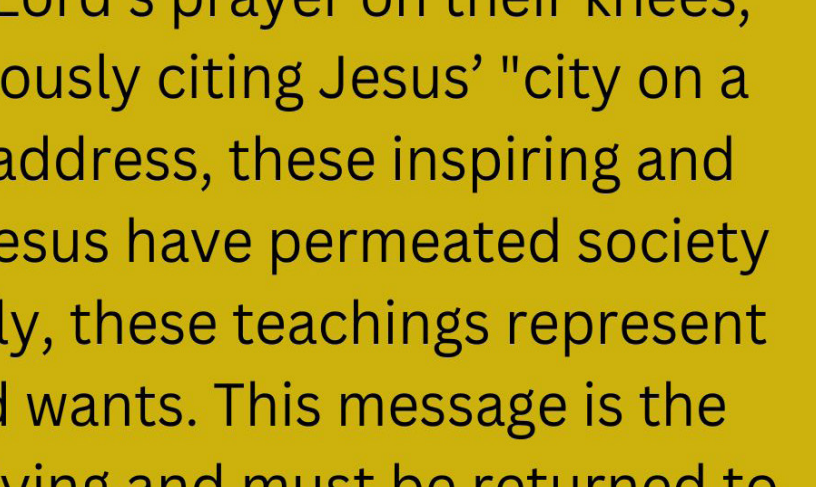
- chapstick
- small bottles of hand sanitizer
- variety of colorful stickers
- Post-It Notes pads
- colorful Sharpies
- construction paper (all colors)
- pencils and sharpeners

If you can help, supplies can be dropped off at Information Central by **January 28**. Monetary donations to purchase supplies can be given to **Aubrie Ross, Judi Lashley, or via Venmo @heartbeat4hope.**



SERMON INFO

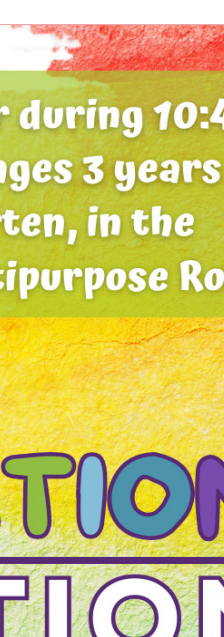
THE SERMON



Of all the passages in the Bible, *The Sermon on the Mount* has arguably had the greatest impact on the world over the last 2000 years. From humble believers reciting the Lord's prayer on their knees, to Ronald Reagan famously citing Jesus' "city on a hill" in a presidential address, these inspiring and challenging words of Jesus have permeated society at all levels. Collectively, these teachings represent the kind of world God wants. This message is the gold standard of holy living and must be returned to again and again. This Sunday, we begin a deep dive into the sermon. What did Jesus mean in his day, and how might we apply these words in our own lives? We hope and pray this series will be a spiritual blessing to your new year.

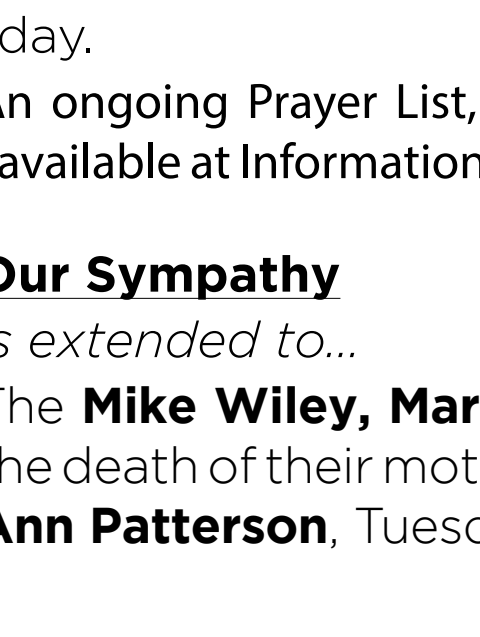
LEARN & LIVE

A STUDY OF 2 PETER & JUDE



There's an old proverb that states, "Live and learn." By that, we are reminded that as we live, we learn through experience, observations, failures, and successes. Instead of learning from living, our new Sunday night series, beginning tonight, will focus on "Learning to Live," based on 2 Peter and Jude. Join us each week for a lesson that shows how we live is based on what we learn.

DISCUSSION QUESTIONS



If you would like to dig deeper into the sermon or Sunday class discussions, check out the MRCC App or visit mrcc.org/dq for supplemental material.

OTHER NOTES

Hospitalized
Charrel Wessel is in Mercy ICU.

Prayer Requests

Trish Heath underwent a heart stent procedure this past Friday.

An ongoing Prayer List, updated at the beginning of every month, is available at Information Central and digitally at mrcc.org/prayerlist.

Our Sympathy

is extended to...

The **Mike Wiley, Mark Wiley, and Jerred England** families on the death of their mother, grandmother, and great-grandmother **Ann Patterson**, Tuesday, Jan. 2.

Ways to give

Prayer Requests

mrcc.org
mrcc app
text amount to:
884.311.2333

We would love to pray for you. Submit your prayer requests at mrcc.org/prayer, or on the MRCC App.

Weekly Budget: \$106,147 | Avg Weekly Offering: \$106,925 | YTD Budget Surplus: \$147,348

2221 EAST MEMORIAL ROAD EDMOND, OK 73013

405.478.0166 | MRCC.ORG

[f](https://www.facebook.com/mrccok) [i](https://www.instagram.com/mrccok) [y](https://www.youtube.com/mrccok) | @MEMORIALROAD